

Provost's Report to Senate on Measures of Institutional Quality

PATRICK MONAHAN, VICE-PRESIDENT ACADEMIC & PROVOST

October 22, 2009



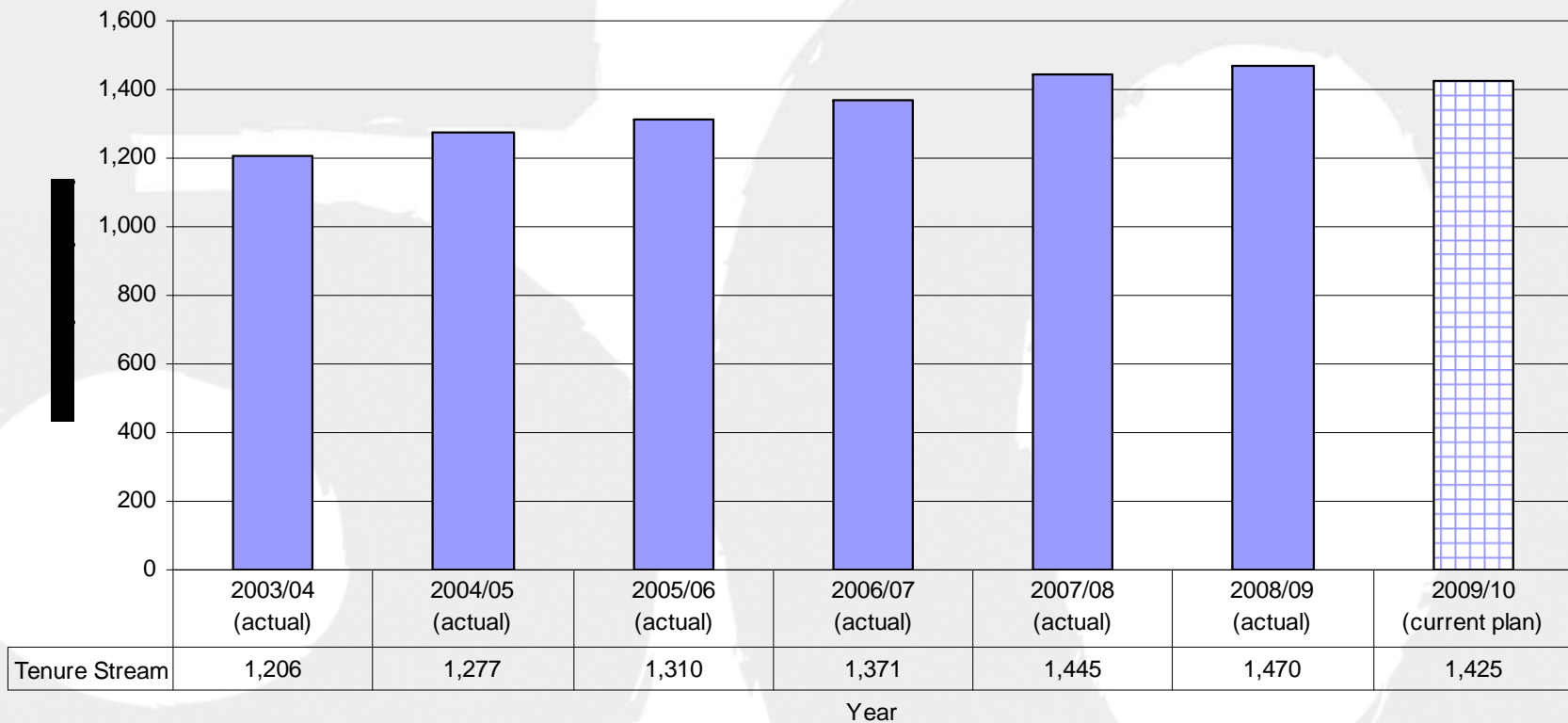
ACADEMIC QUALITY and the UNIVERSITY ACADEMIC PLAN

- UAP: attaining the highest academic quality across the full range of academic activities is a fundamental goal of the university
- Academic quality reflects the quality of faculty, students and programs
- VPRI will make a presentation on quality of research at November meeting of Senate

Times Higher Education-Top University Rankings York University

Year	All Disciplines	Arts and Humanities	Engineering & IT	Life Sciences & Biomedicine	Natural Sciences	Social Sciences
2007	248	78	276	365	262	41
2008	252	70	281	n/a	263	53
2009	273	108	n/a	n/a	281	89

TENURE STREAM COMPLEMENT PLANNING: FACULTY AND LIBRARIANS (October 1st)



TRENDS 1999-2000 TO 2009-2010: TENURE STREAM APPOINTMENTS: GENDER BREAKDOWN

APPT. YEAR	MALE		FEMALE		TOTAL # OF APPTS.
1999-2000	33	47.8%	36	52.2%	69
2000-01	39	52.0%	36	48.0%	75
2001-02	35	57.4%	26	42.6%	61
2002-03	41	54.7%	34	45.3%	75
2003-04	46	55.4%	37	44.6%	83
2004-05	66	46.8%	75	53.2%	141
2005-06	41	53.2%	36	46.8%	77
2006-07	79	56%	62	44%	141
2007-08	53	52.5%	48	47.5%	101
2008-09	39	56.5%	30	43.5%	69
2009-10	9	50%	9	50%	18
TOTAL	481	52.8%	429	47.2%	910

STUDENT/FACULTY RATIOS

	2003-04	2004-05	2005-06	2006-07	2007-08	2008-09
<i>Including Both Full-time and Part-time Faculty</i>						
Undergraduate (including TAs)	17.0	17.0	16.9	16.5	15.6	15.4
Undergraduate (excluding TAs)	20.0	19.9	19.7	19.2	18.2	18.0
<i>Including Full-time Faculty Only</i>						
Undergraduate	30.6	30.5	30.6	29.7	28.2	27.9
Graduate	2.9	2.7	2.6	2.7	2.8	2.9
Total Students	33.4	33.3	33.2	32.4	31.0	30.8
<i>Including Tenured and Tenure Stream Faculty Only</i>						
Undergraduate	32.9	32.7	33.7	32.7	30.7	30.0
Graduate	3.1	2.9	2.9	3.0	3.1	3.2
Total Students	36.0	35.7	36.6	35.7	33.8	33.2

AVERAGE CLASS SIZE BASED ON PRIMARY MEET

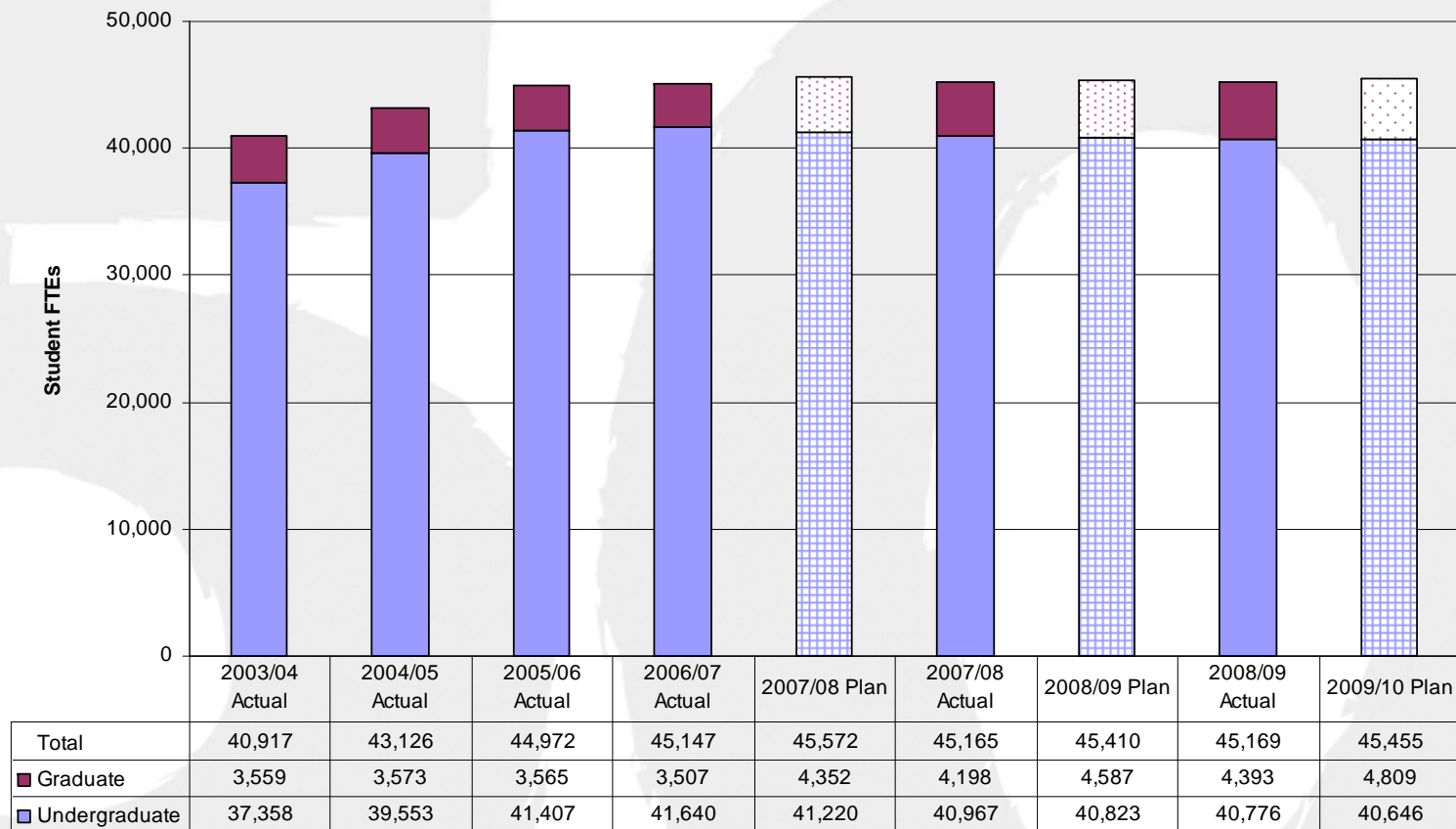
Study Level	2003- 2004	2004- 2005	2005- 2006	2006- 2007	2007- 2008	2008- 2009
1 st Year Level	89.0	84.3	83.2	81.3	81.8	86.0
2 nd Year Level	60.8	63.7	62.0	61.7	60.0	60.9
3 rd Year Level	35.0	36.3	37.3	36.4	34.8	34.0
4 th Year Level	18.9	18.8	20.4	21.4	20.9	20.8

PERCENT OF TIME SPENT IN CLASSES WITH FEWER THAN 30 STUDENTS

Study Level	2003-2004	2004-2005	2005-2006	2006-2007	2007-2008	2008-2009
1 st Year Level	28.6%	29.4%	28.8%	29.4%	27.0%	30.7%
2 nd Year Level	31.6%	28.1%	27.5%	28.7%	28.6%	30.9%
3 rd Year Level	30.9%	29.8%	29.9%	29.6%	31.4%	32.5%
4 th Year Level	47.0%	47.4%	45.7%	46.4%	48.0%	49.7%

Source: Office of Institutional Research and Analysis

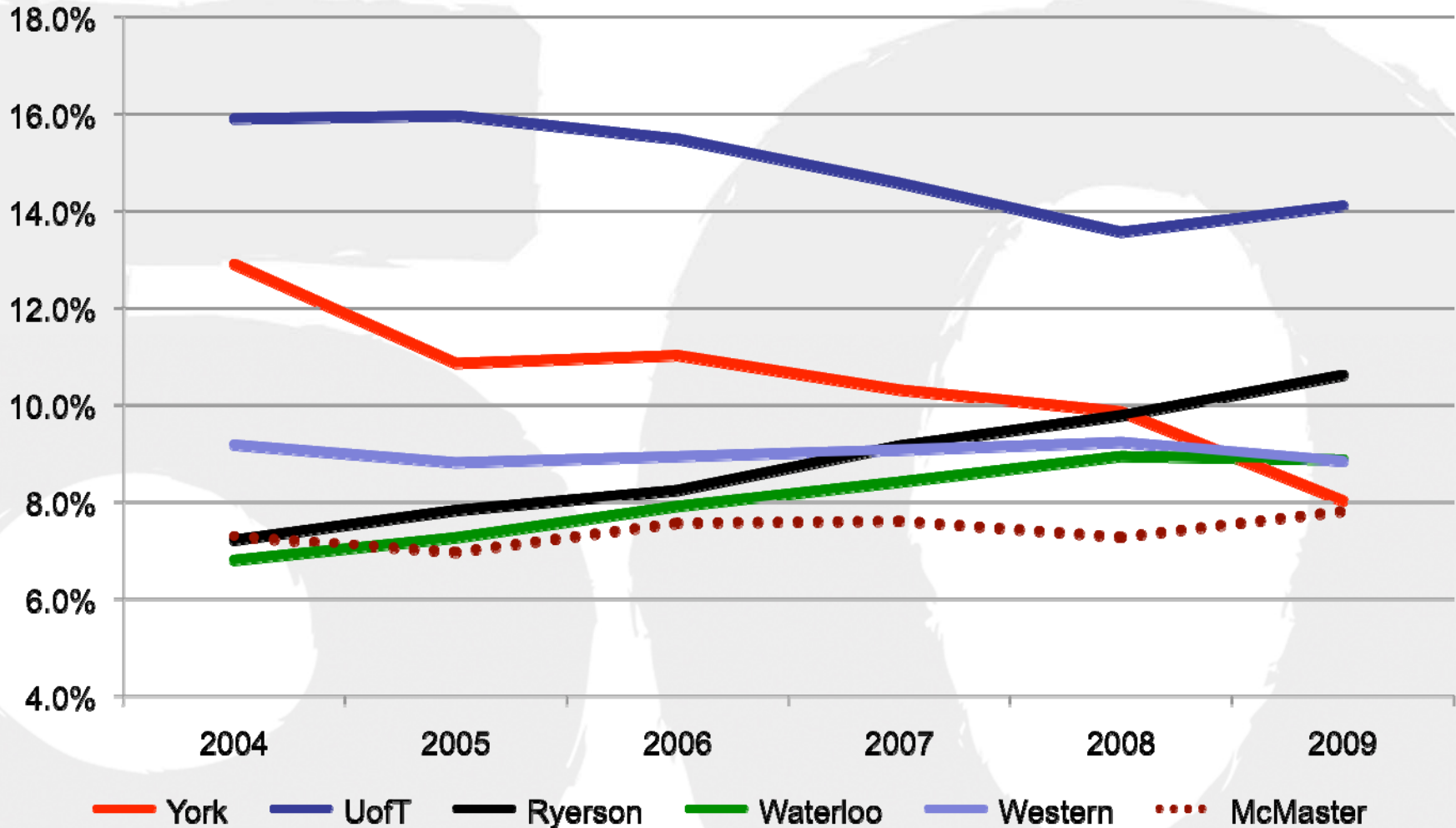
ENROLMENT PLANNING: Total (FTE) Enrolments: Graduate and Undergraduate



Please Note: 2008/2009 and 2009/2010 enrolment plans as of May 2008 and submission for MYAA October 2008

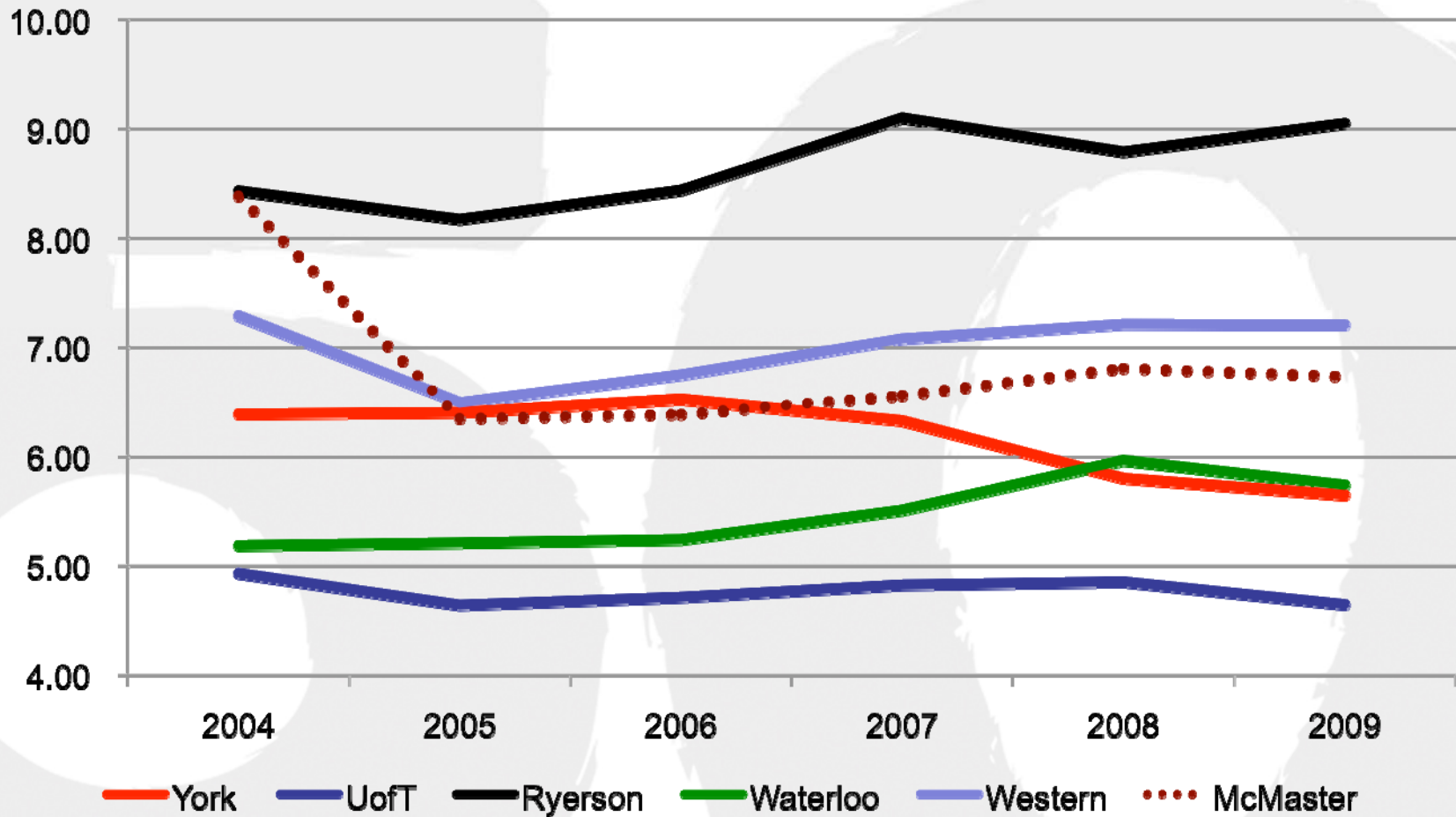
Source: Office of the Associate Vice President Academic Resource Planning

Market Share of (First Choice) 101 Applicants 2004 – 2009



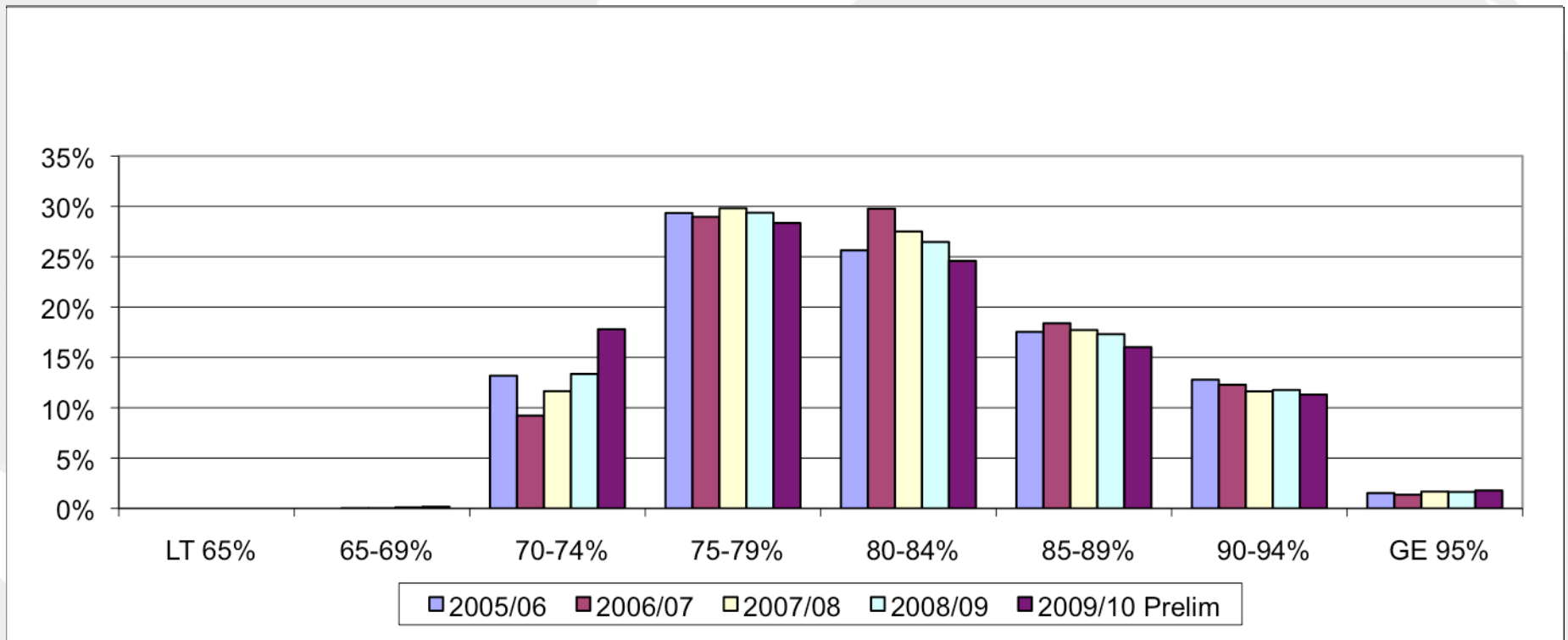
Source: Ontario University Application Centre

Number of 101 Applications per Confirmed Acceptance 2004 - 2009



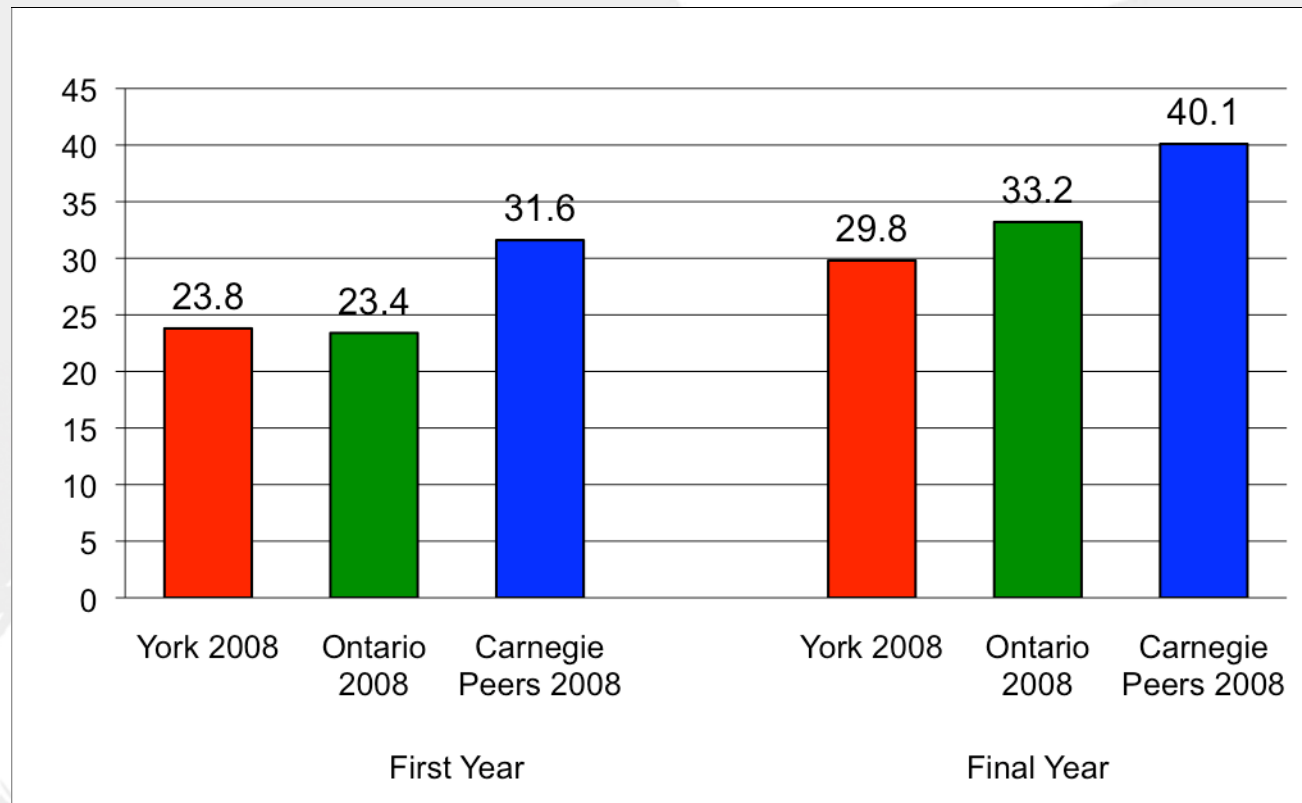
Source: Ontario University Application Centre

Distribution of 101 Entering Grades 2005-06 to 2009-10 (preliminary)



Source: OIRA

Student Satisfaction with Faculty Instruction (1): NSSE Benchmark Student-Faculty Interaction



Survey Items

Discussed grades or assignments with an instructor.

Talked about career plans with a faculty member or advisor.

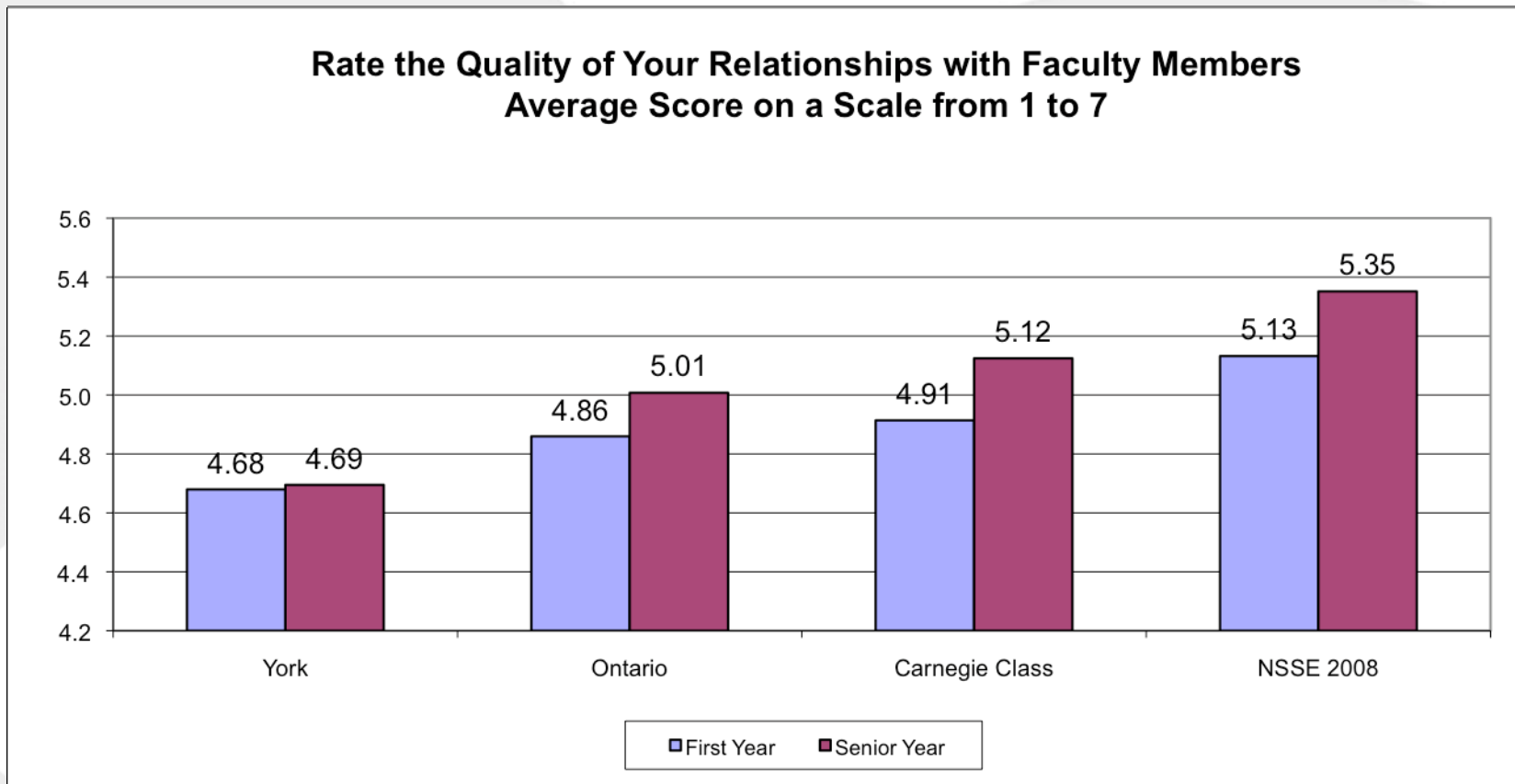
Discussed ideas from your readings or classes with faculty members outside of class.

Worked with faculty members on activities other than coursework (committees, orientation, student-life activities, etc.).

Received prompt feedback from faculty on your academic performance (written or oral).

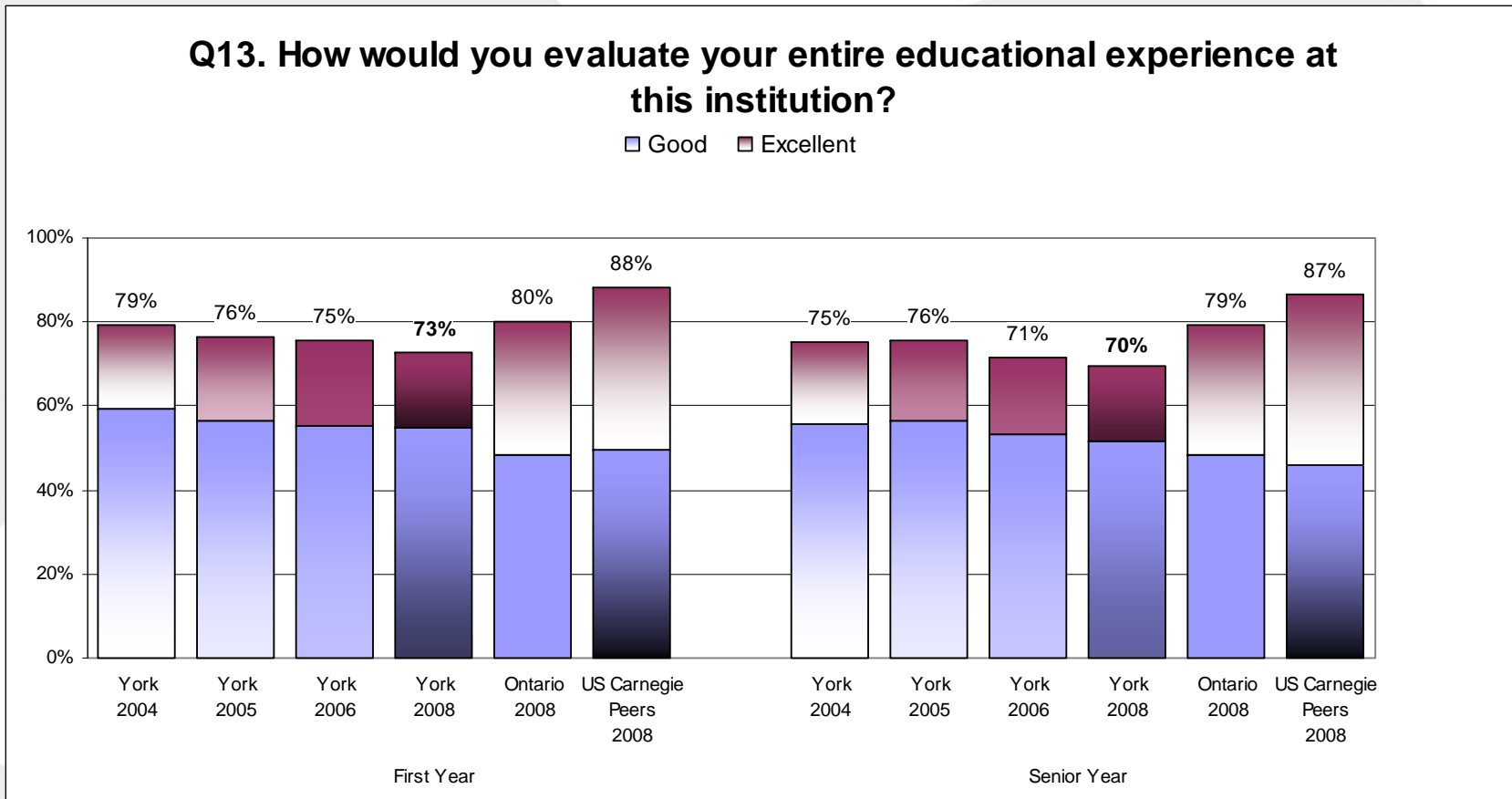
Worked with a faculty member on a research project outside of course or program requirements.

Student Satisfaction with Faculty Instruction (1): NSSE Quality of Relationships with Faculty Members



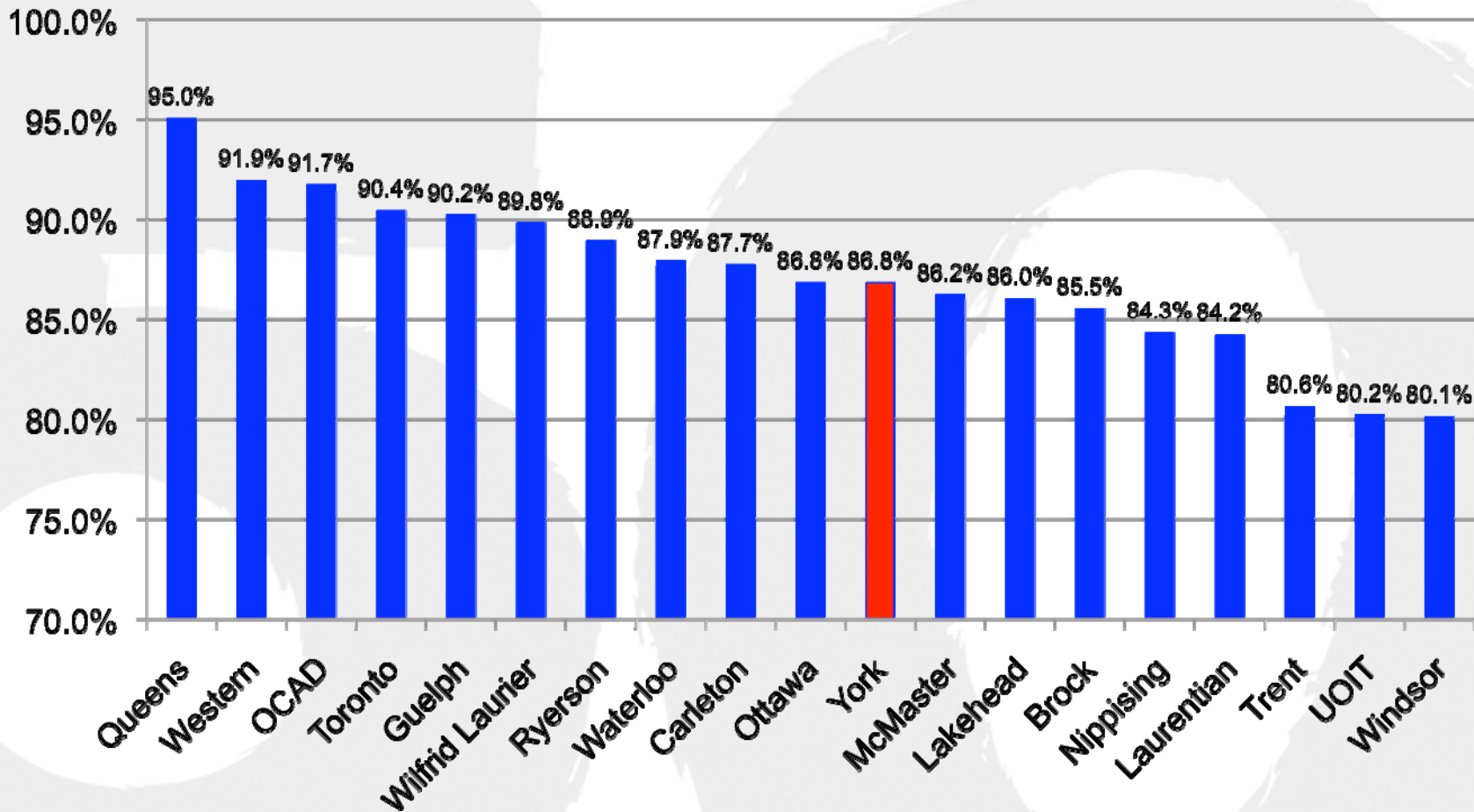
Source: 2008 NSSE

Percentage of Students who Attain their Academic Goals



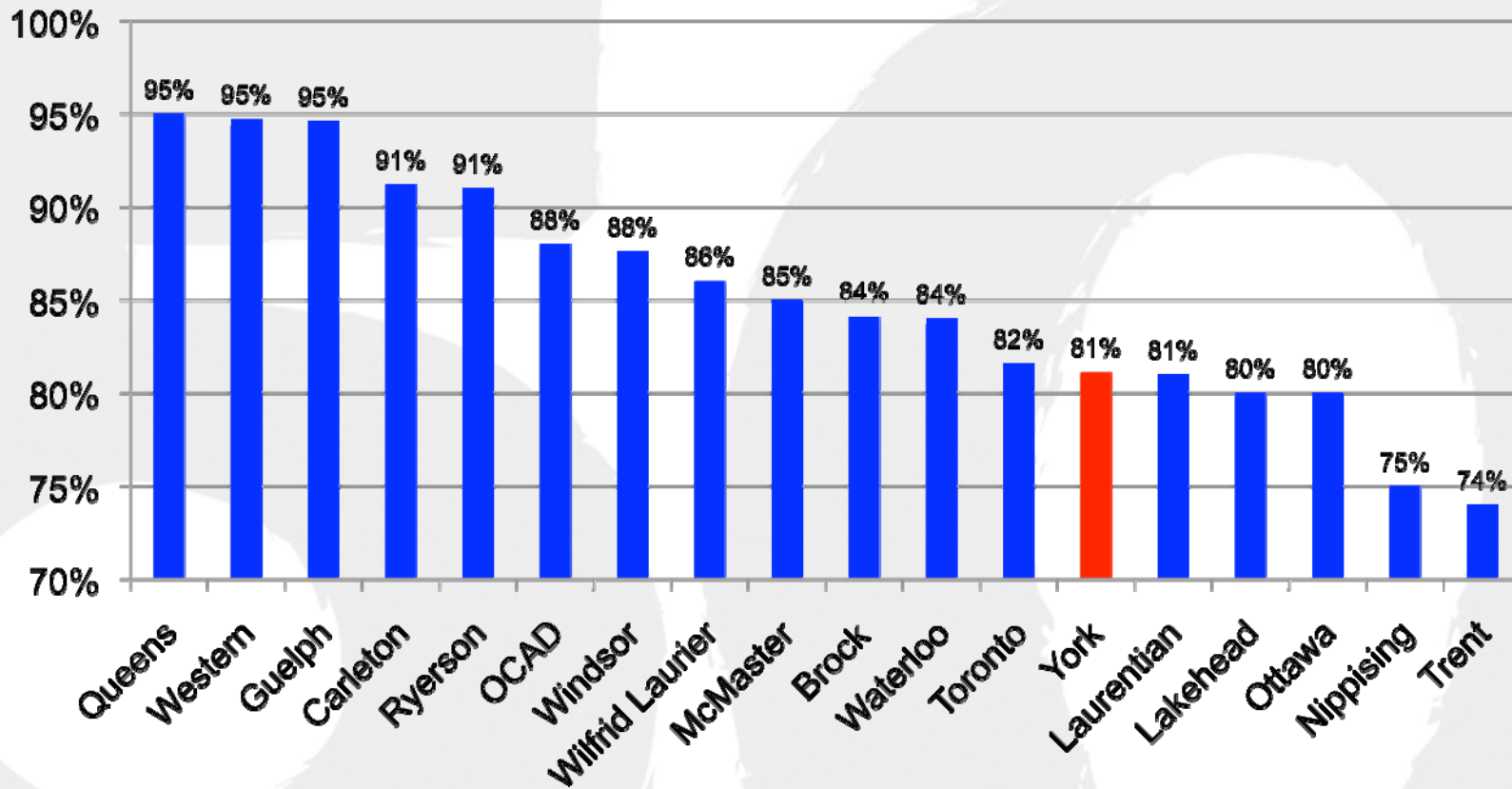
Source: 2008 NSSE

Year 1 to 2 Retention Rates – Full Time Students



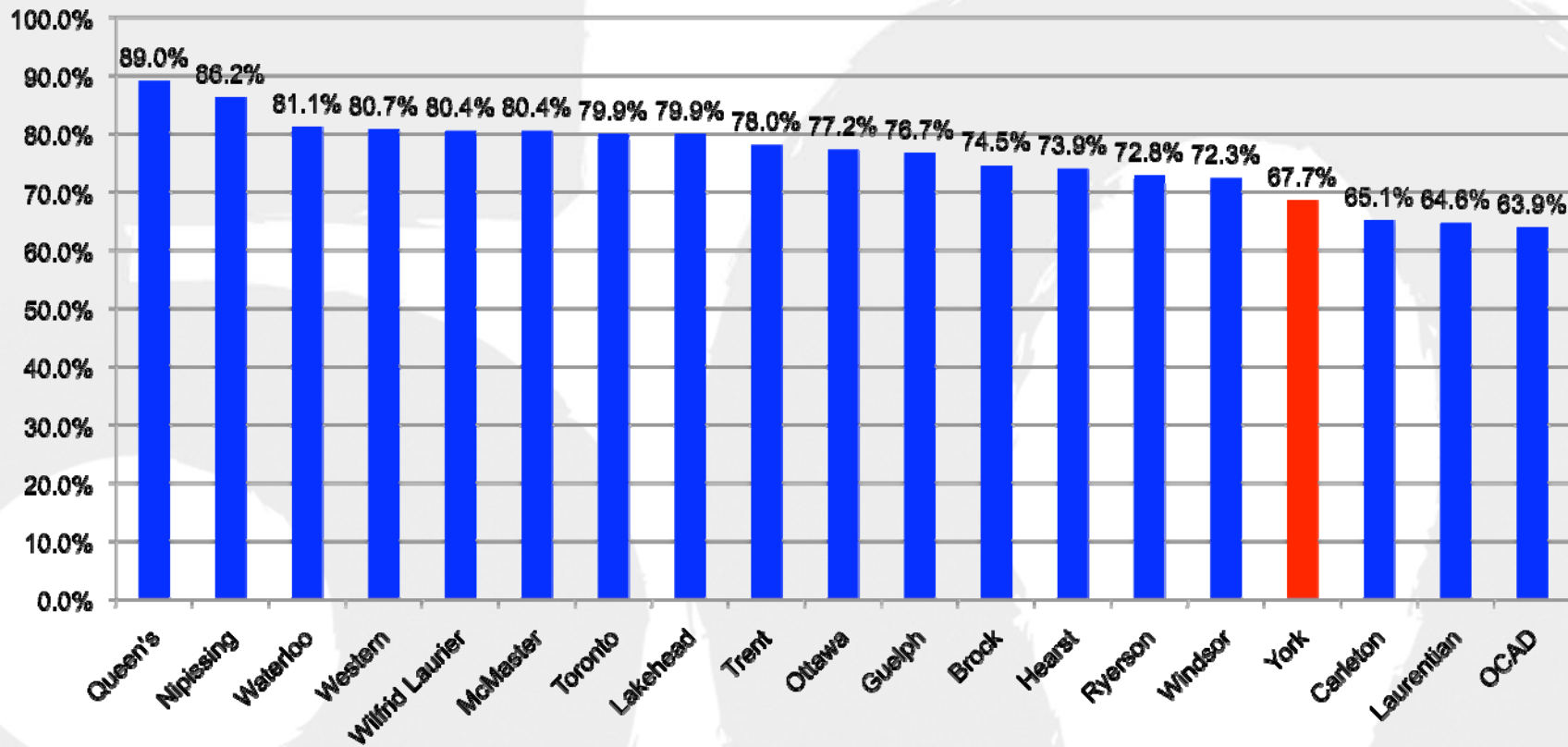
Source: Consortium on Student Retention Data Exchange

After Year 2 Retention Rates – Full Time Students



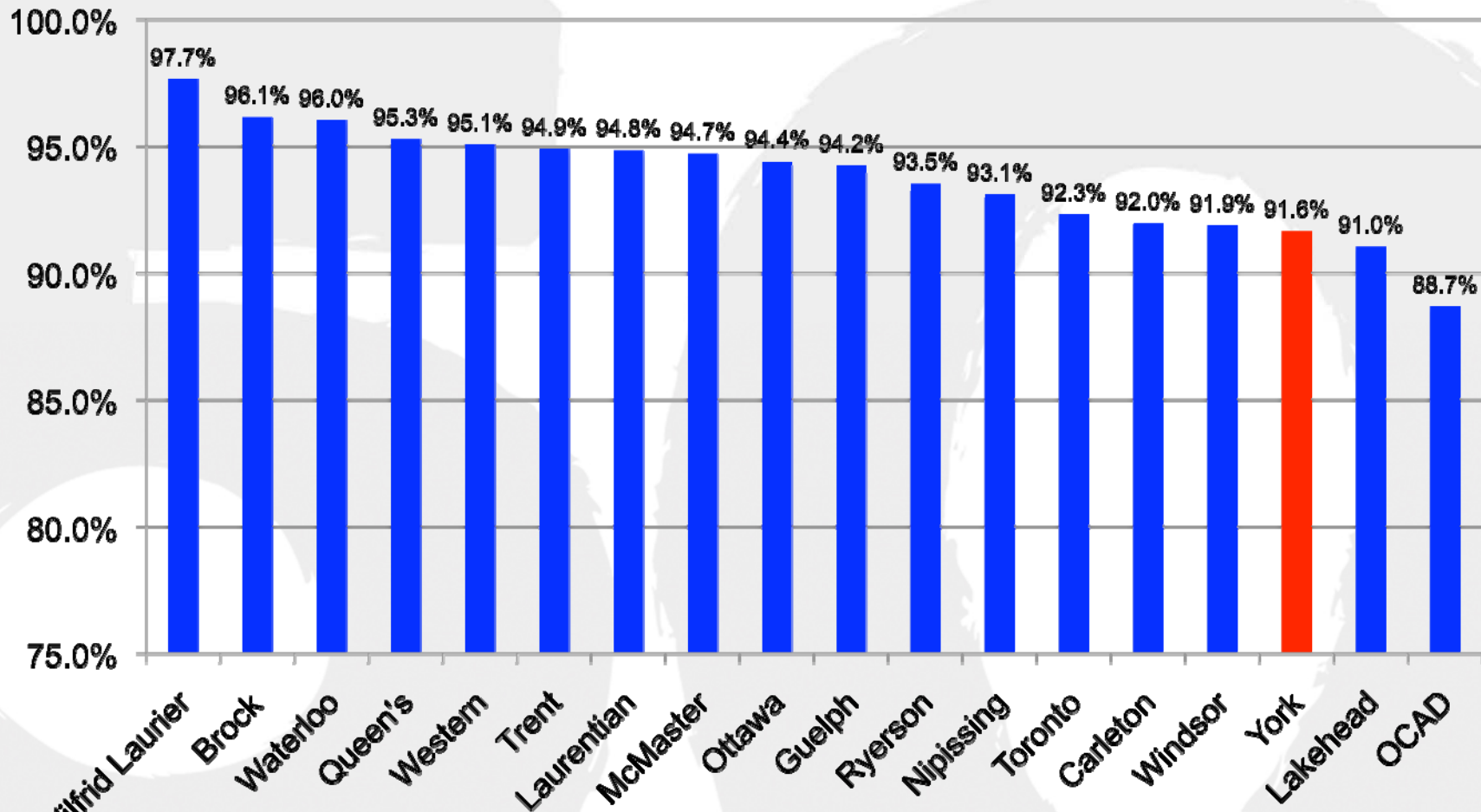
Source: Consortium on Student Retention Data Exchange

Seven Year Graduate Rates – Full Time Students



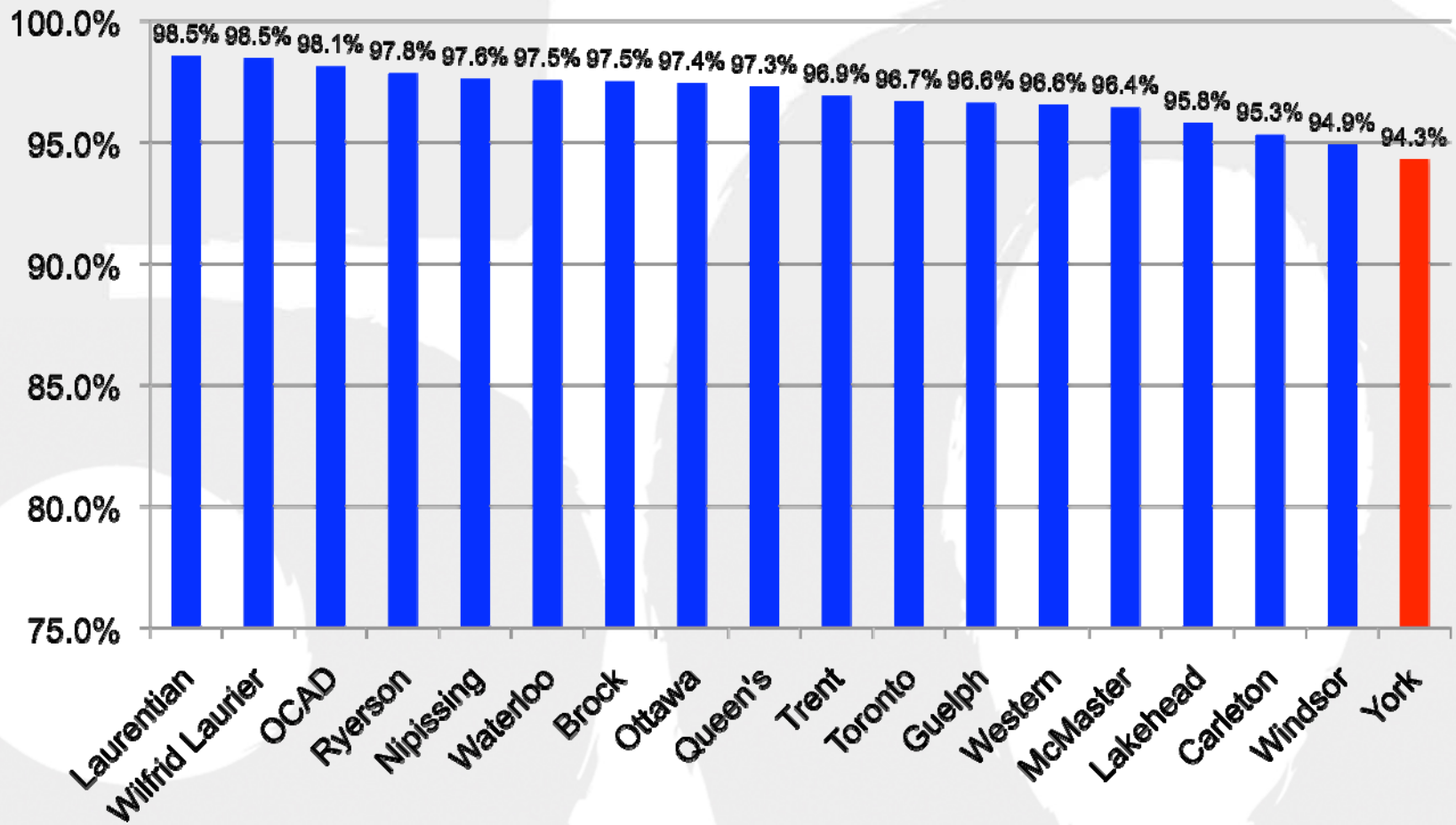
Source: MTCU

6 Month Employment Rates – Ontario System



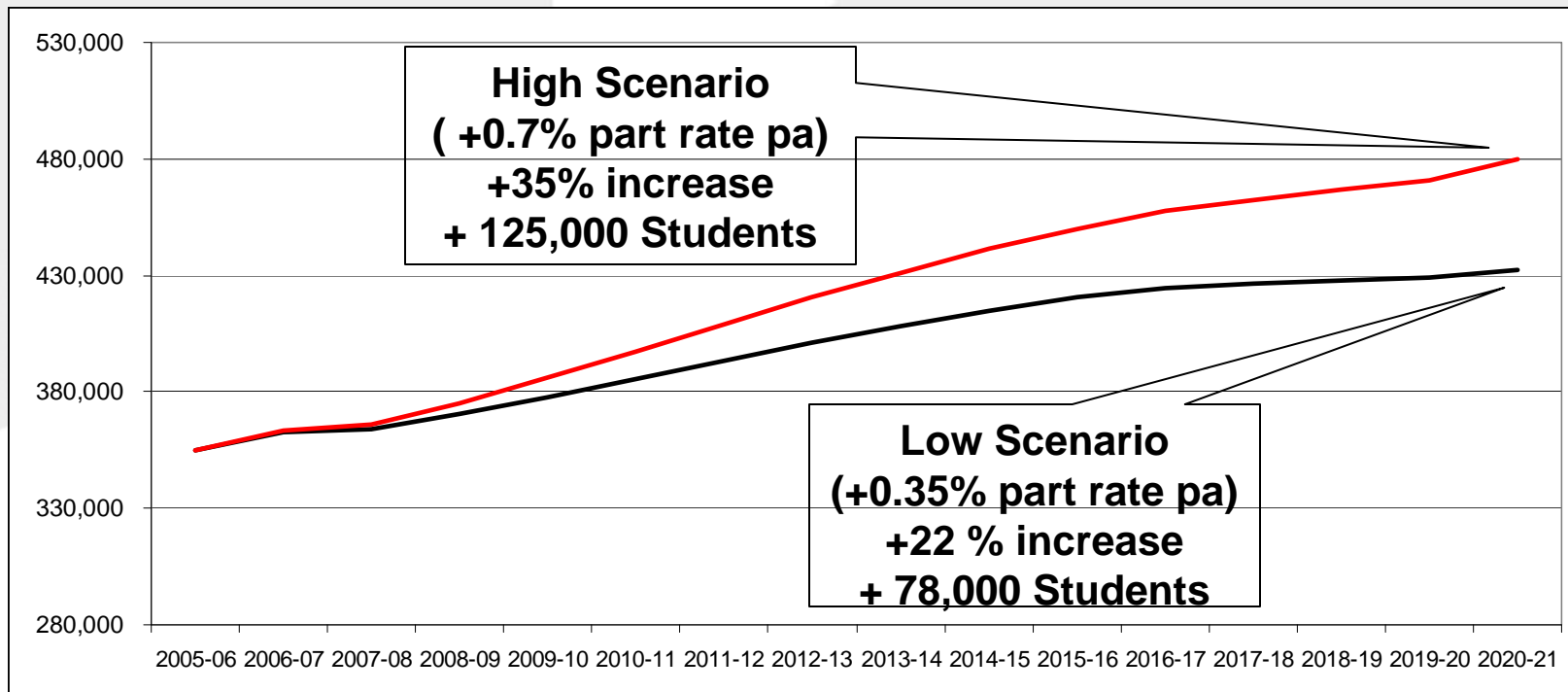
Source: MTCU

Two Year Employment Rates – Ontario System



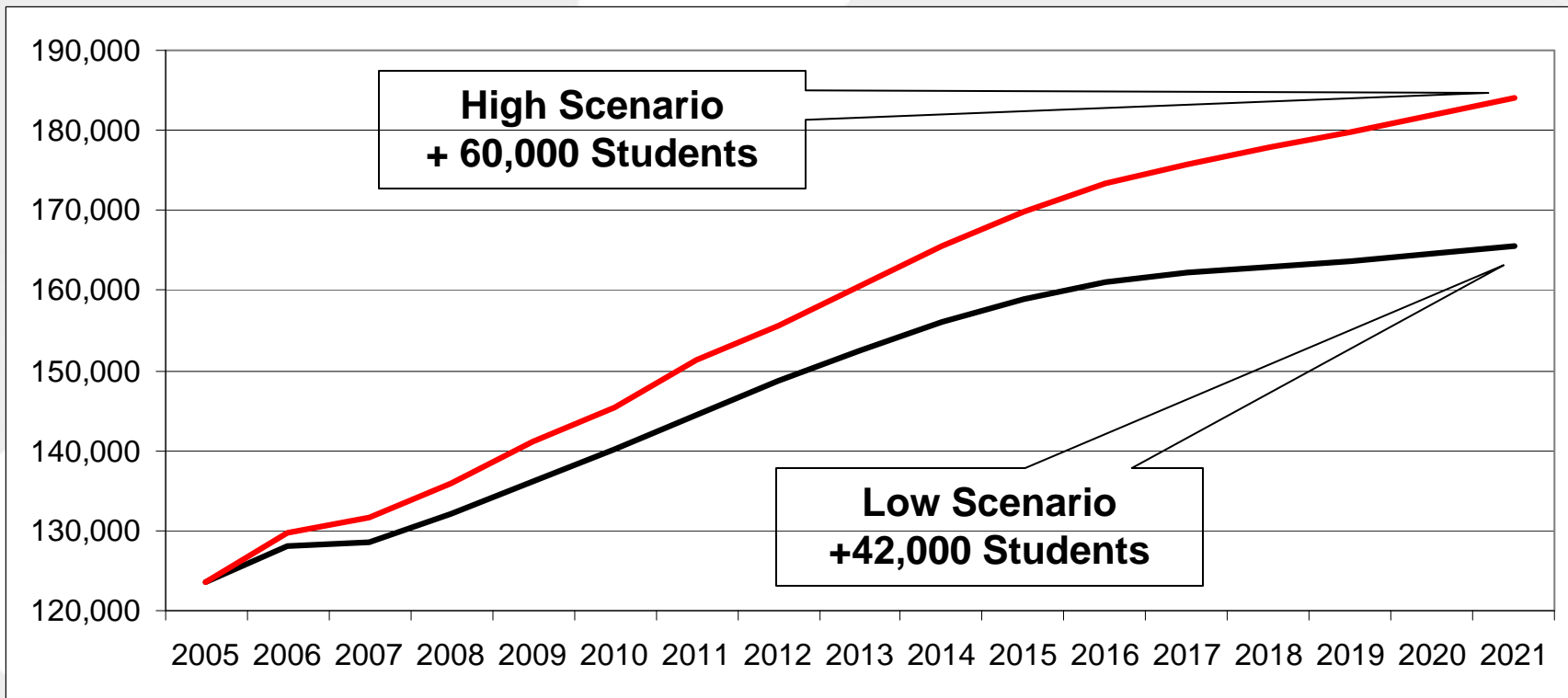
Source: MTCU

Enrolment Demand Will Increase Significantly Over The Next 15 Years.



Source: OIRA

Projected Growth Required for GTA Universities to Maintain Share of GTA Enrolments



Source: OIRA

CONCLUSIONS

- Despite areas of strength, York U. faces considerable challenges – not clear that we have enhanced quality over the last 5 years
- White Paper process is designed to address issues of quality
- Goal: to significantly improve quality across a range of measures, and to monitor our progress over time